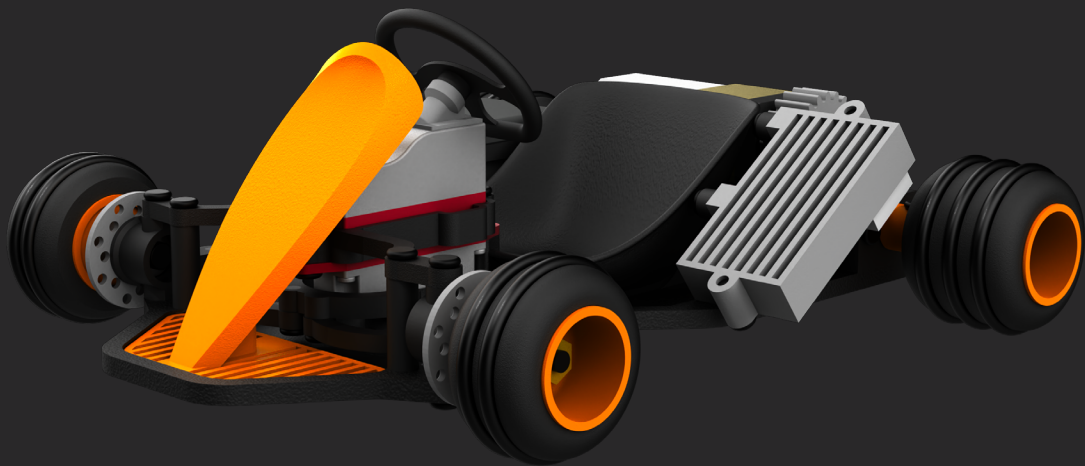




printed_racers



STREET KART

user manual



What you need:

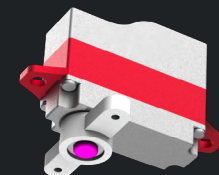
Filament	PLA / PC CF		
Hardware	M1.6x3mm	6x	link
	M1.6x4mm	25x	link
	M1.6x5mm	7x	link
	M1.6x6mm	21x	link
	M1.6x8mm	1x	link
	M2.0x14mm	2x	link
	M2.0 nuts	2x	link
	Bearings 2x5x2,5mm	6x	link
	0.9mm hex screwdriver	1x	link
	1.5mm hex screwdriver	1x	link
	Rubber oring OD16mm, ID13mm, CS1,5mm	10x	link
	Brass standoff 9mm (optional)	4x	link
	2mm brass or steel rod (at least 77,5mm)		
	Double-sided tape		
	Solder iron		
	Grease		
	CA glue		
	Activator		
Motor	N20 6V 500-800rpm	1x	link
ESC	AS12/6RW EASY	1x	link
Servo	KST X06 V6	1x	link
Battery	120mAh 2S	1x	link
Rx	Dasmikro micro 4ch	1x	link

Street kart assembly

1. Cut **red** parts off from KST X06 servo horn.



2. Secure servo horn with provided **screw**.



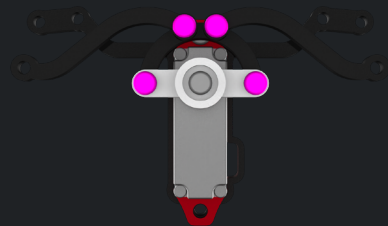


Street kart assembly

- 3.**
Secure upper plate and servo with **M1.6x5mm** screw.



- 4.**
Secure steering links and servo horn with **M1.6x4mm** screws. Two arms of steering links has to move freely but without any wobble. Use grease for more smooth movement.



Street kart assembly

- 5.**
Secure servo and seat with **M1.6x8mm** screw.



- 6.**
Secure printed or brass 9mm standoffs with **M1.6x6mm** screws.



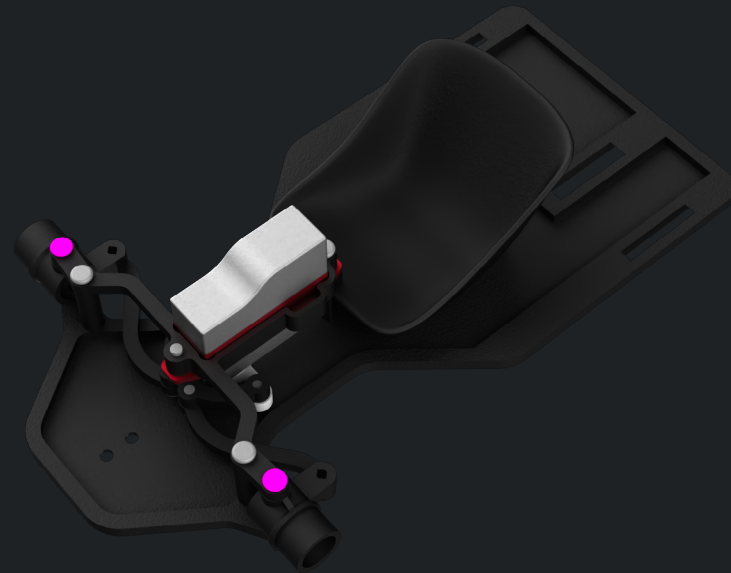


Street kart assembly

7. Secure upper plate, servo and seat to lower plate with **M1.6x3mm**, **M1.6x4mm** and **M1.6x6mm** screws.



8. Secure spindles from above with **M1.6x4mm** screws. Spindle horns should be on the bottom position. Spindles has to move freely but without any wobble. Use grease for more smooth movement.



Street kart assembly

9. Secure spindles from below with **M1.6x4mm** screws. Connect spindles and steering links with **M1.6x4mm** screws. Spindles has to move freely but without any wobble. Use grease for more smooth movement.



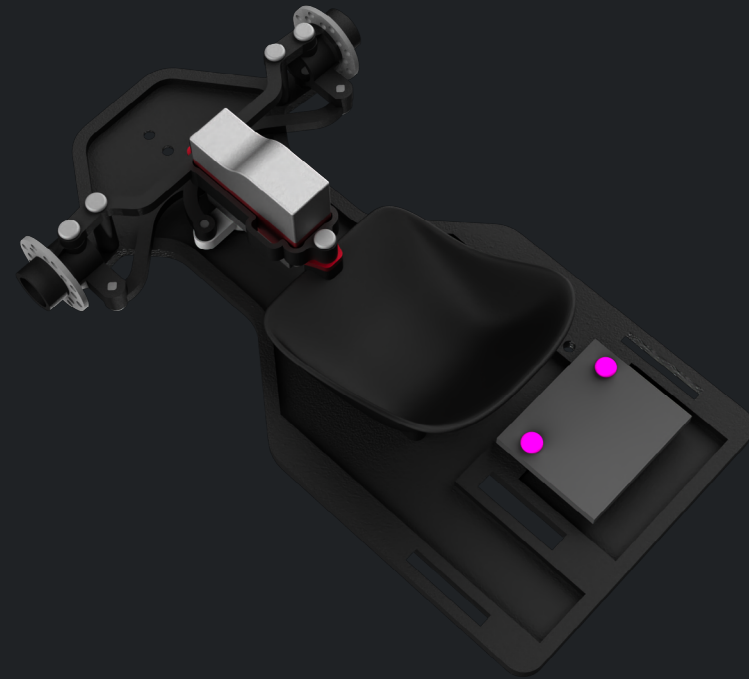
10. Glue brake discs to the spindles with CA glue. Use activator if necessary.



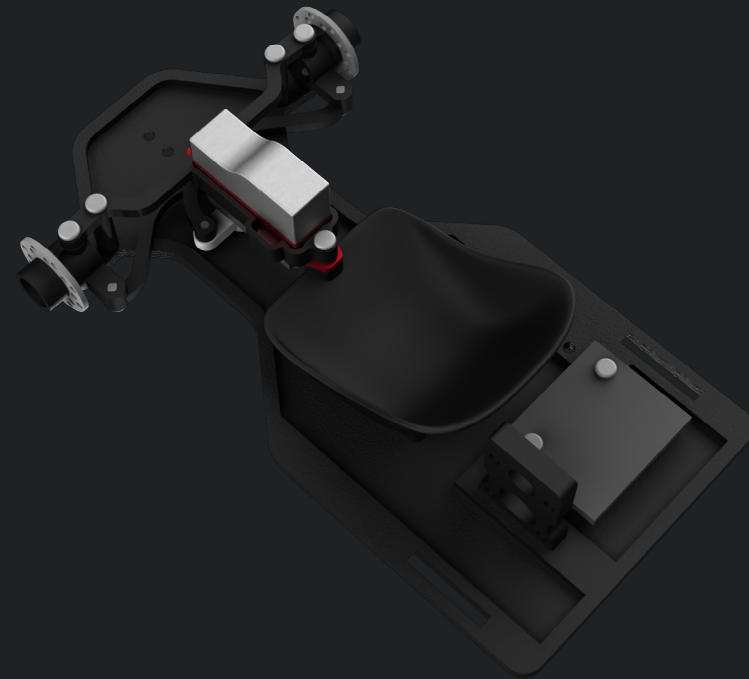


Street kart assembly

11. Solder all wires on your ESC. Wires should be longer than necessary for better future cable management and manipulation. Secure ESC with **M1.6x4mm** screws to the lower plate.



12. Install motor mount from below to the lower plate. Fitment should be without any tolerance.

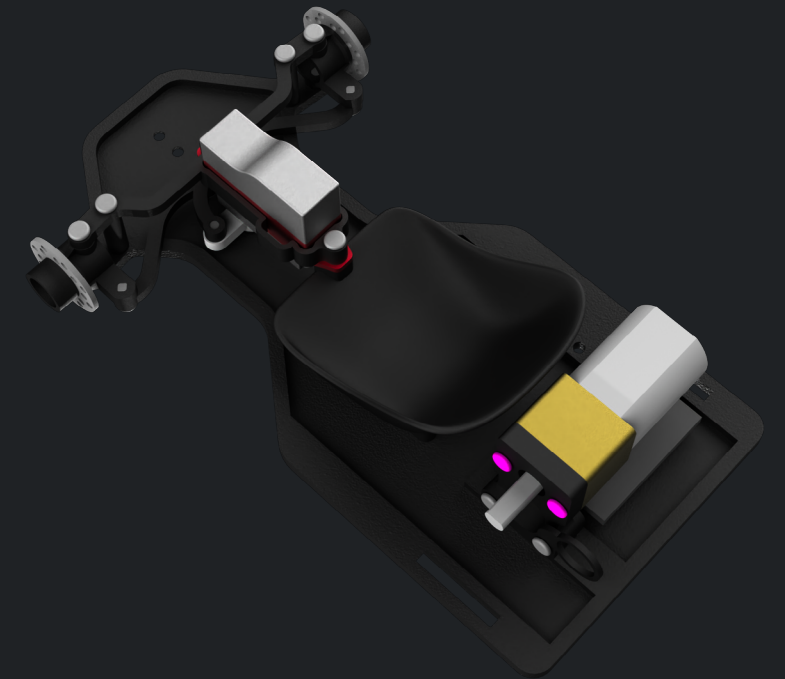


Street kart assembly

13. Secure motor mount with plastic parts on both sides with **M1.6x6mm** screws.



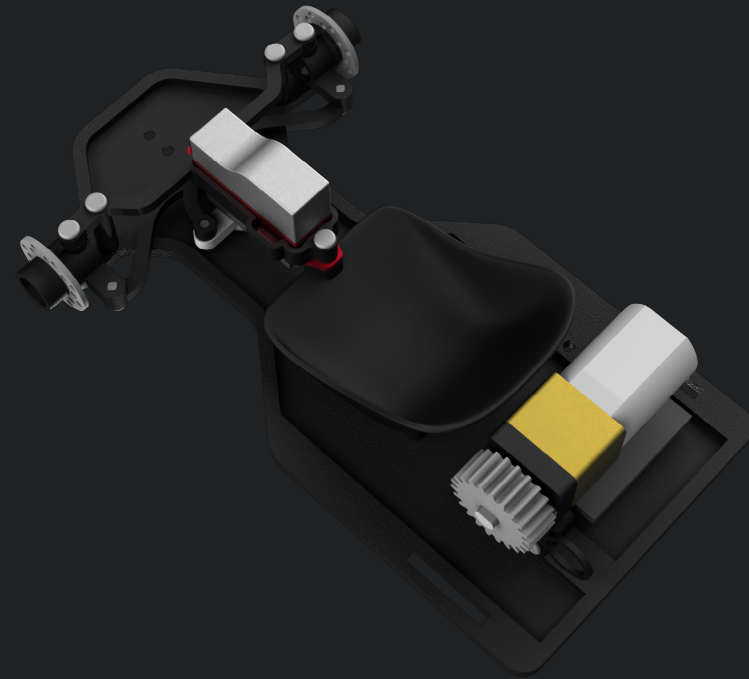
14. Secure N20 motor with **M1.6x4mm** screws.



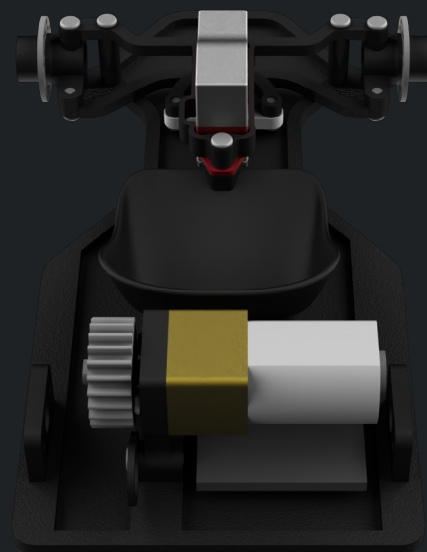


Street kart assembly

15.
Solder wires from ESC to the N20 motor. Install motor gear to the motor shaft. Fitment should be without any tolerance.

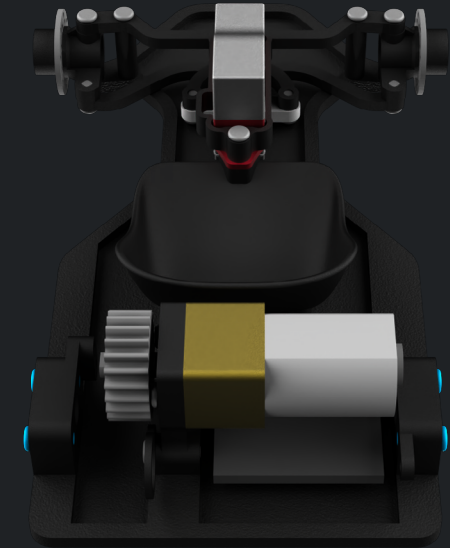


16.
Install rear axle bearings mounts from below to the lower plate. Fitment should be without any tolerance.

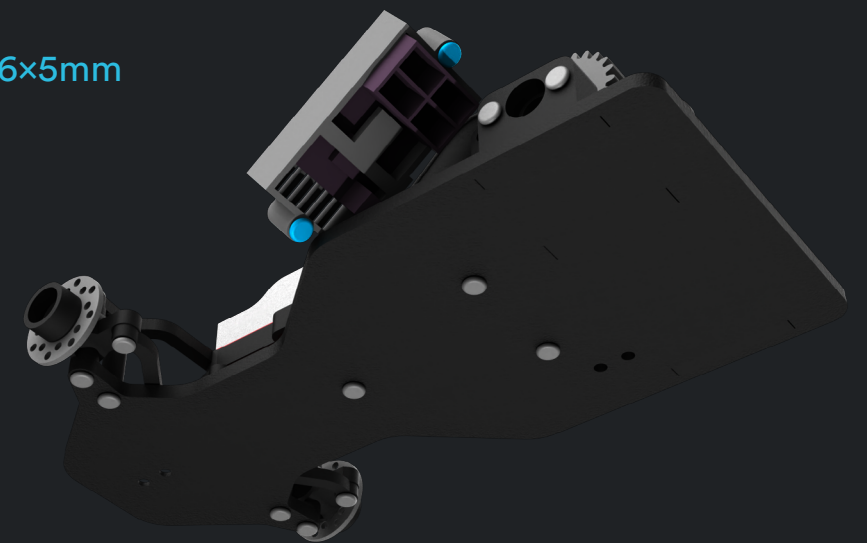


Street kart assembly

17.
Secure rear axle bearings mounts with plastic parts on both sides with **M1.6x5mm** screws.



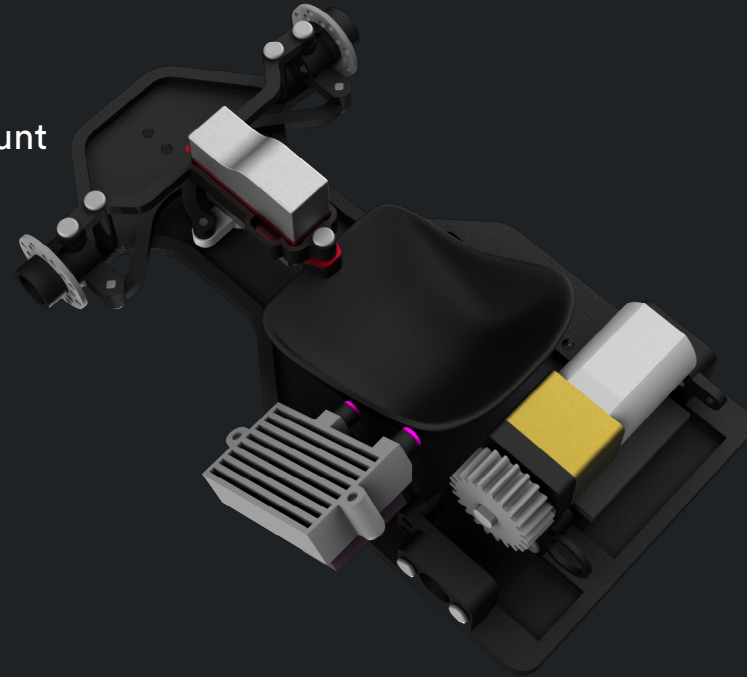
18.
Secure RX in cooler with **M1.6x5mm** screws.



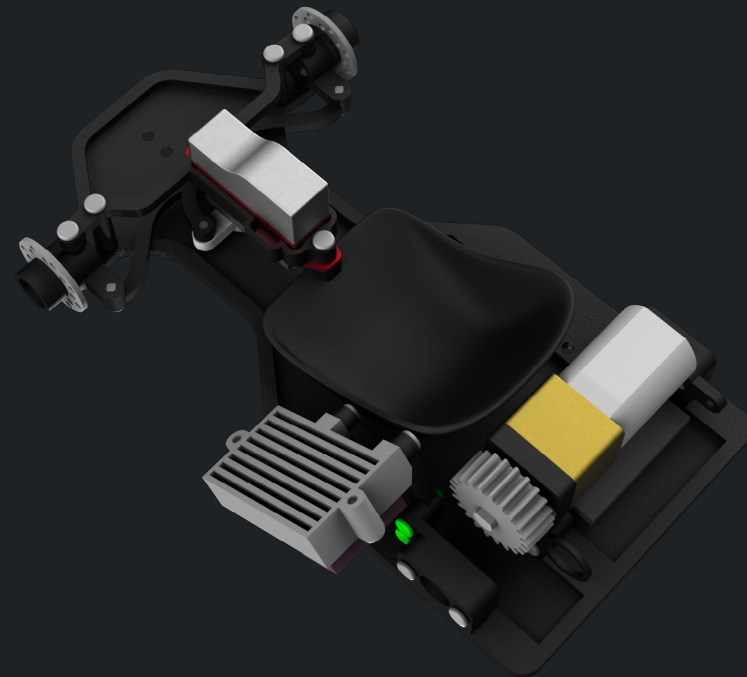


Street kart assembly

19.
Secure cooler and cooler mount
with **M1.6x4mm** screws.

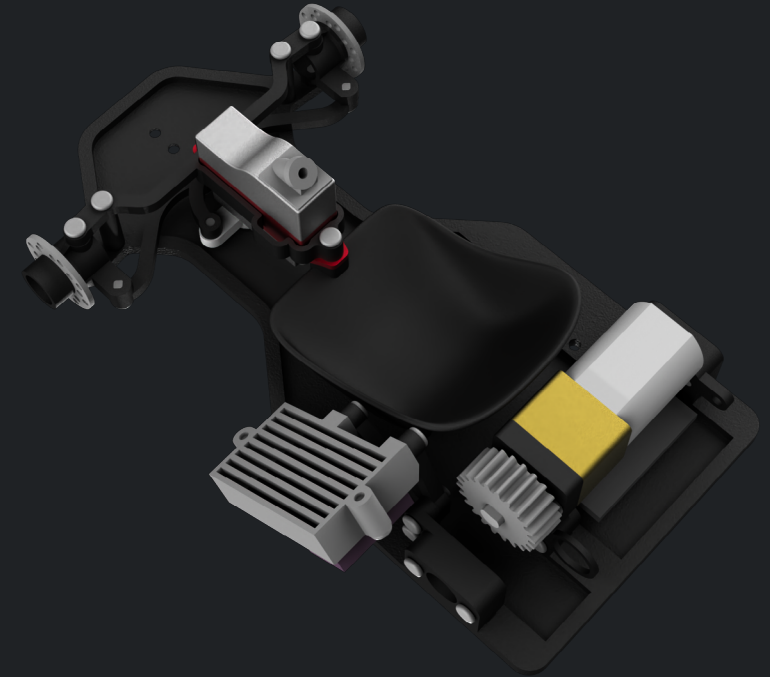


20.
Secure cooler to the left
rear axle bearing mount
with **M1.6x6mm** screws.
Connect ESC and servo
wires to the RX.

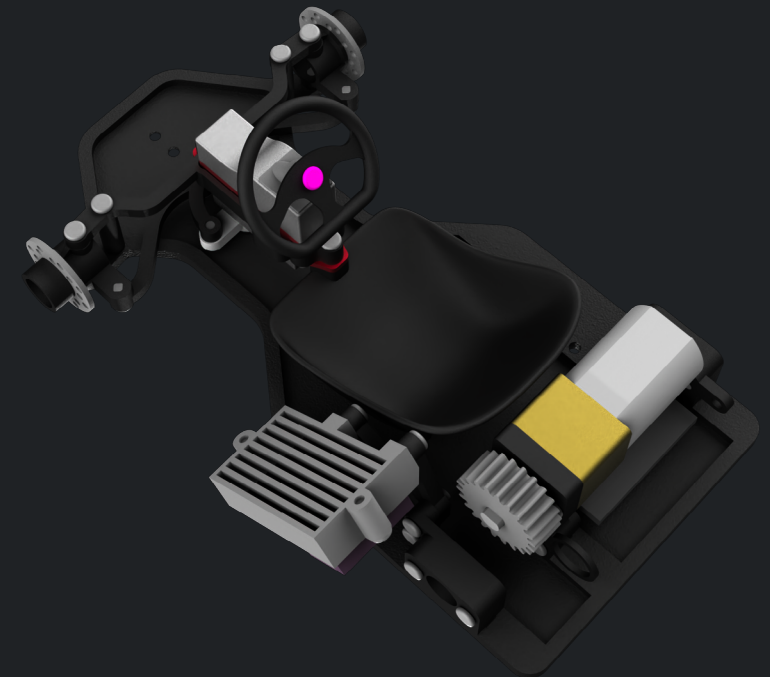


Street kart assembly

21.
Secure steering wheel base
with self adhesive tape
to the servo.



22.
Glue two parts of steering
wheels with CA glue.
Use activator if necessary.
Secure steering wheel to
the steering wheel base
with **M1.6x4mm** screw.

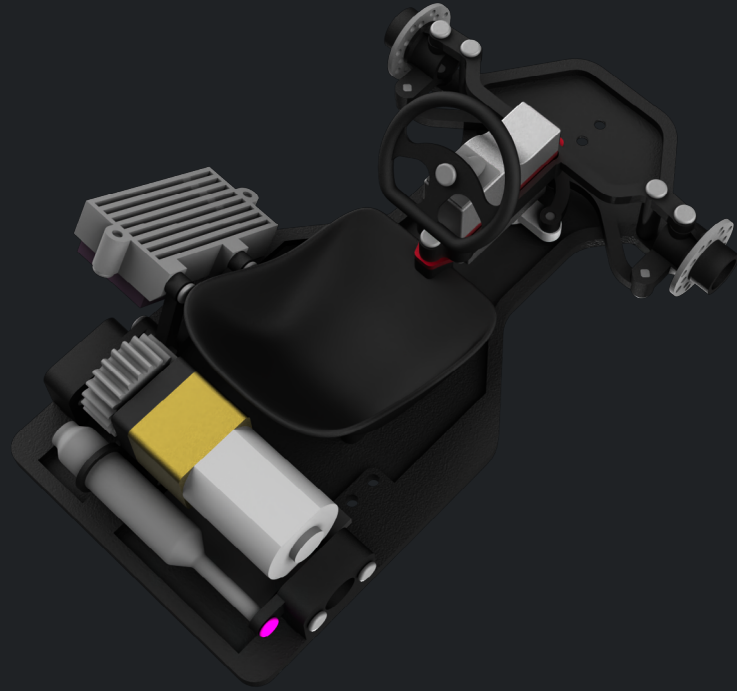




Street kart assembly

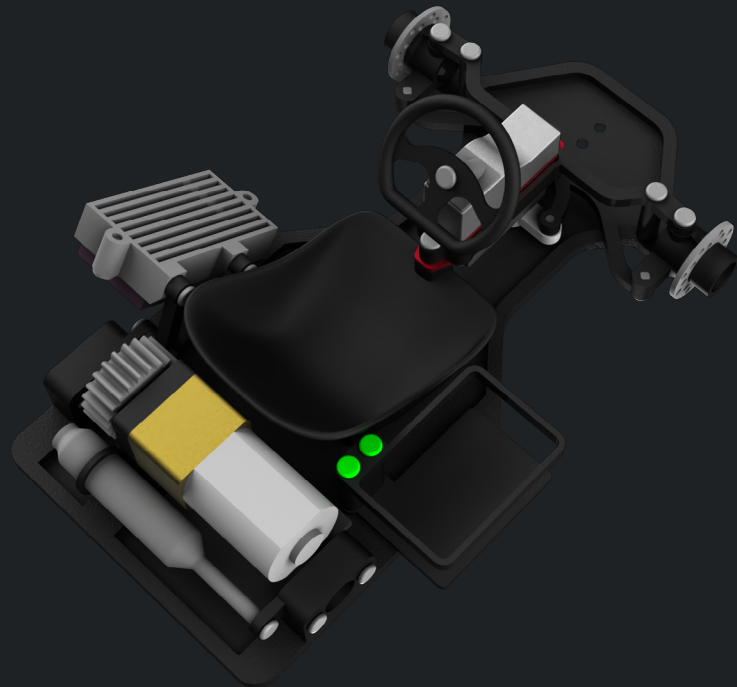
23.

Secure exhaust with **M1.6×4mm** screw. Exhaust needs to be printed separately in vase mode.



24.

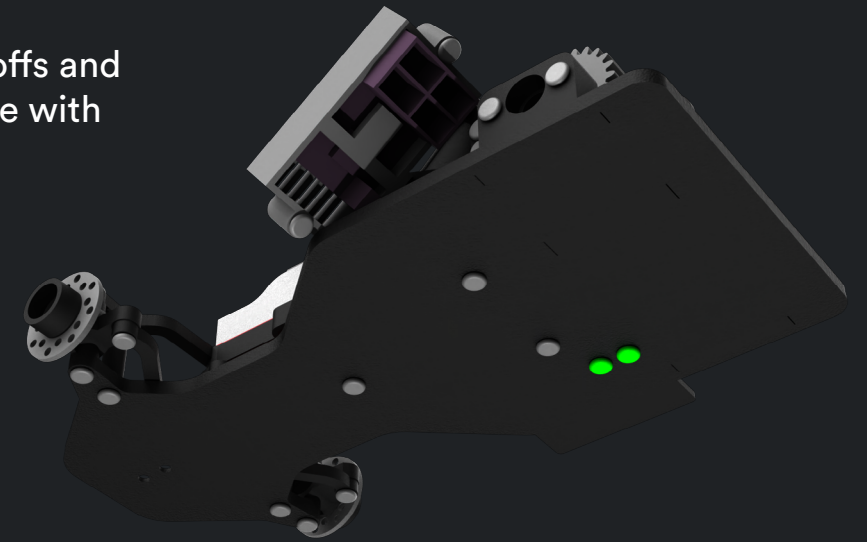
Secure battery holder to the printed or brass standoffs with **M1.6×6mm** screws.



Street kart assembly

25.

Secure battery holder standoffs and battery pad to the lower plate with **M1.6×6mm** screws.



26.

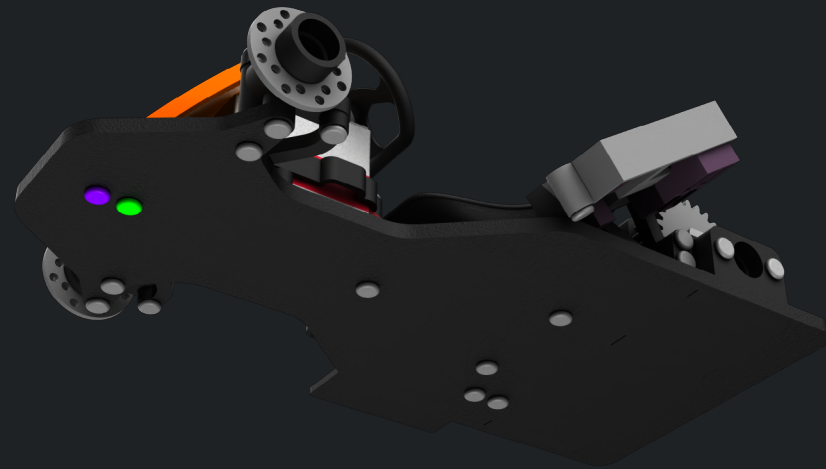
Place front bodywork to its place.



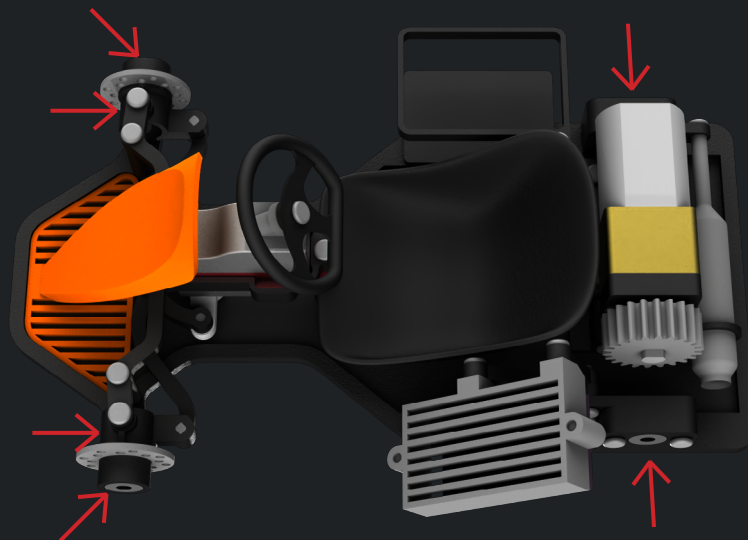


Street kart assembly

27.
Secure front bodywork with **M1.6x3mm** and **M1.6x6mm** screws.



28.
Insert two 2x5x2,5mm bearings in each spindle. Insert 2x5x2,5mm bearing on each side to the rear axle bearing mount.

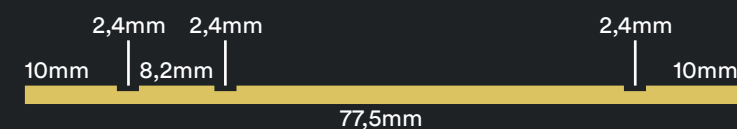
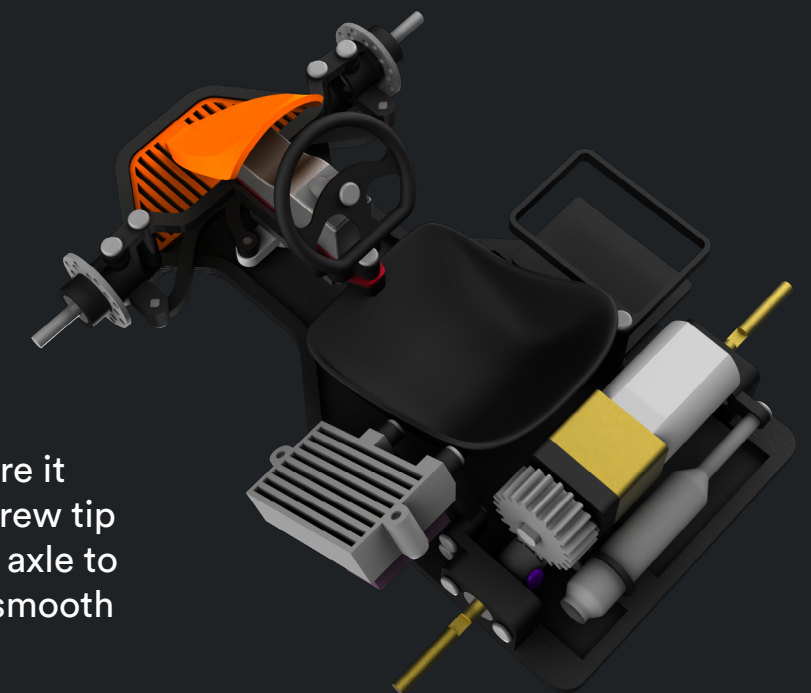


Street kart assembly

29.
Insert **M2.0x14mm** screws as front axles. Use small piece of tape or thread to achieve perfect fit of screws in bearings without wobble.



30.
Cut 2mm brass rod to 77,5mm length. Use file or rotary tool to make three notches on axle as shown below. If the axle does not go into the bearing easily, sand its surface a little. Install axle gear to its place and secure it with **M1.6x3mm** screw. The screw tip should touch the notch on the axle to fix it on place. Use grease for smooth movement of the gears.





Street kart assembly

31.
Prepare all tires.

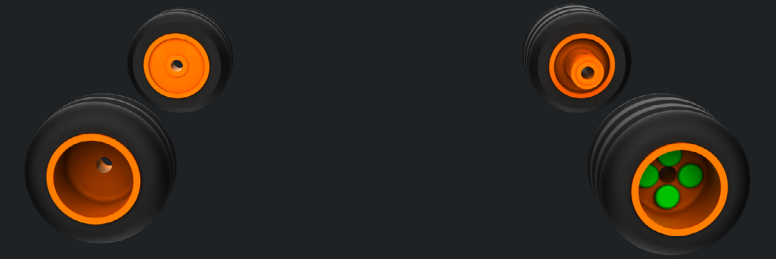


32.
Insert rims to the tires.
Fitment should be
without any tolerance.

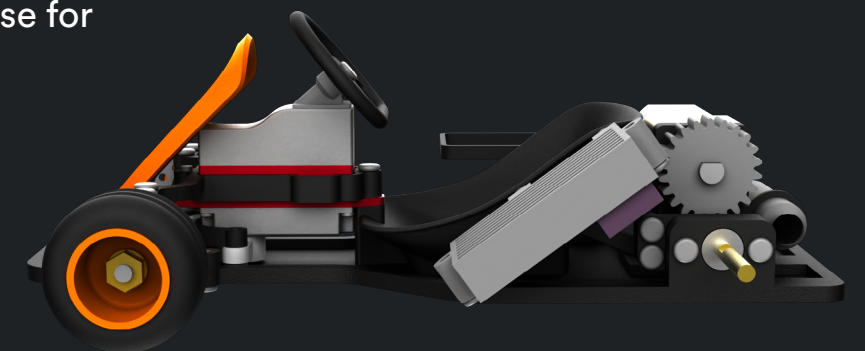


Street kart assembly

33.
Secure rear rims with
M1.6x6mm screws.



34.
Install front wheels on **M2.0x14mm**
screws and secure them with M2.0
nuts. Wheels should spins freely but
without wobble. Use grease for
smooth movement.



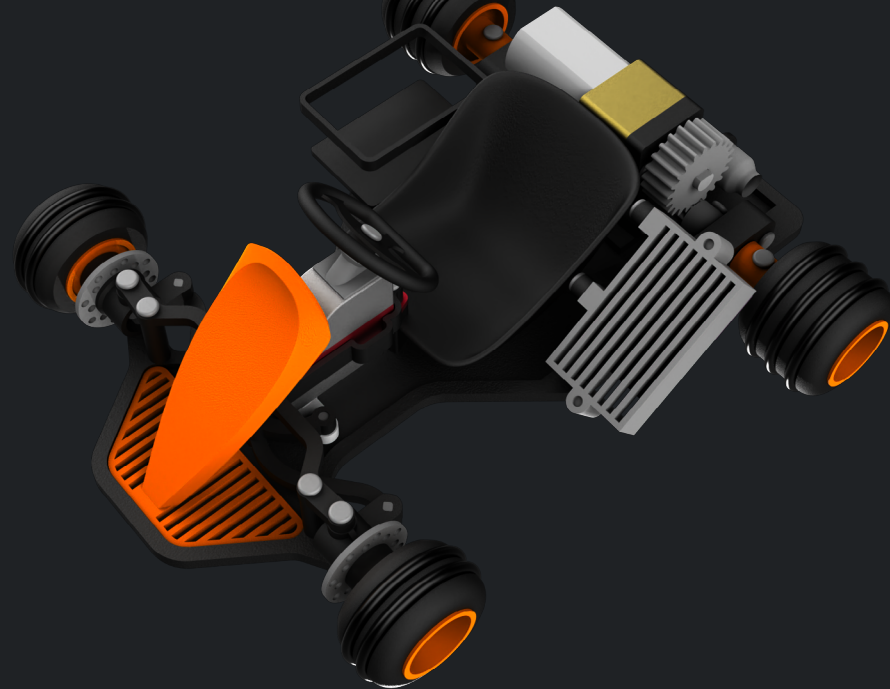


Street kart assembly

35.
Secure rear wheels with **M1.6x3mm** screws. The screw tip should touch the notch on the axle to fix it on place.



36.
Use rubber orings to achieve great adhesion and silent riding experience. Depends on your driving style and floor surface it may be necessary to add little weight to the front part of the kart.

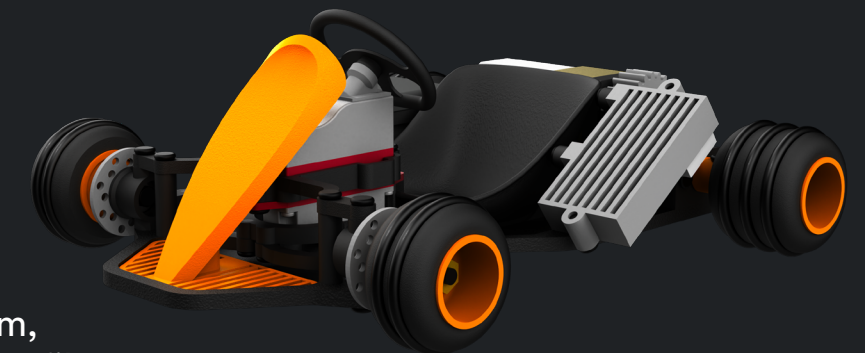


Street kart assembly

37.
Install battery.



38.
Done! Enjoy your new street kart, because it will never be as clean as at this moment.



Sent me best photos of your kart on my instagram, I will share them on my profile!



 [printed_racers](#)

